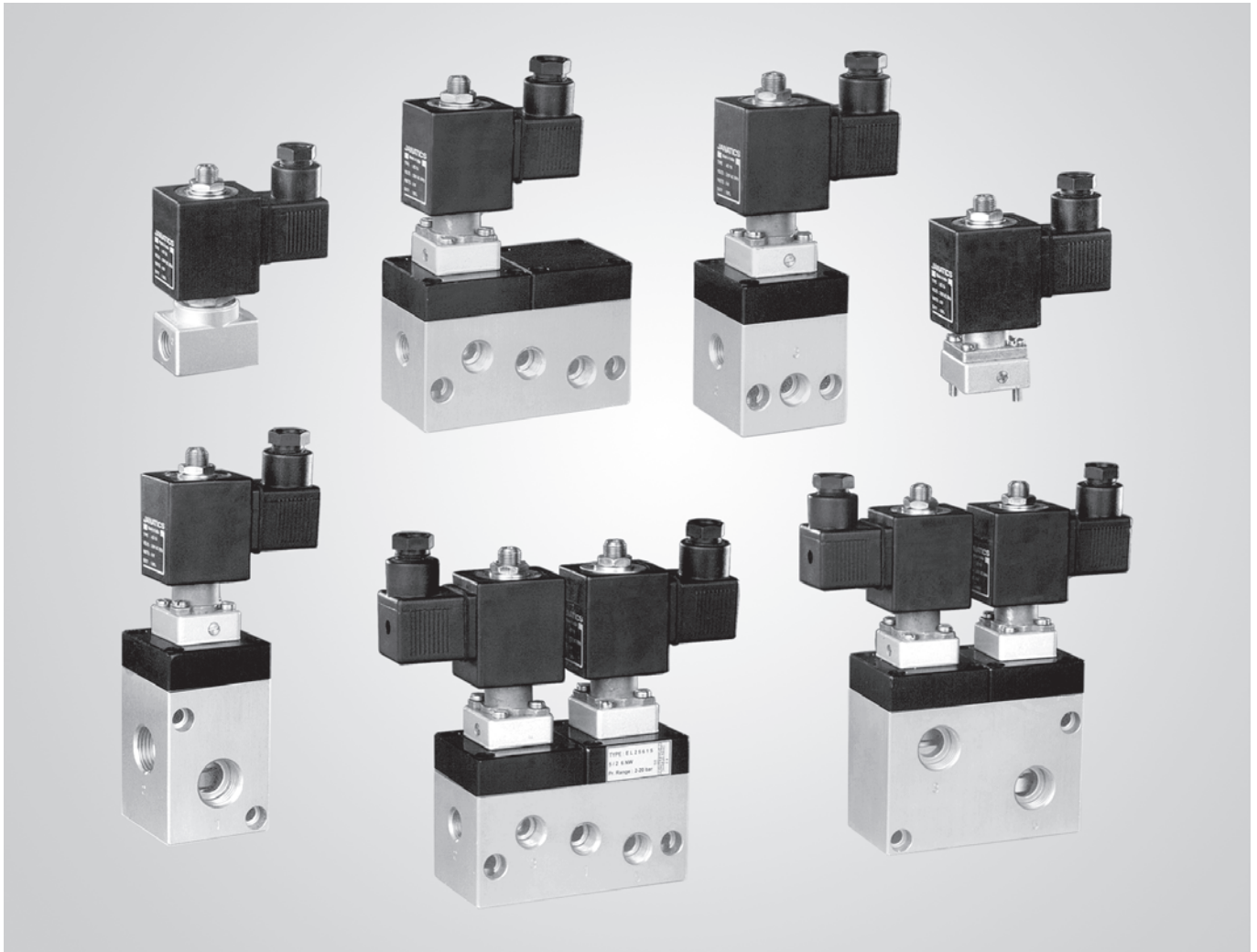


# Solenoid Valve

Series : J

Sizes : G1/4, G1/2



- 2/2 Direct acting valves
- 3/2 direct acting, normally closed / normally open valve.
- 2/2, 3/2 Gang mounting valves, manifolds
- 3/2, 5/2 Single solenoid pilot operated valves
- 5/2 Double solenoid pilot operated valves

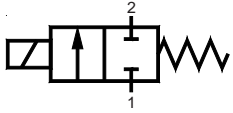
# SOLENOID VALVE - ORDERING CODE

## AC

REF. CAT. NO.	TYPE OF VALVE	PORT SIZE			NW	Operating pressure range ( bar )	ORDERING NO. WITH COIL VOLTAGE OF (all coils are provided with DIN connector type socket S1)				Remarks	
		IN	OUT	EXH			AC					
							220 V	110 V	48 V	24 V		
<b>Direct acting valves</b>												
J001 - 04	2/2 NC	G1/4	G1/4	NIL	3.0	0 - 10	E12614A	E12614B	E12614D	E12614G		
J013 - 02	2/2 NC	G1/4	G1/4	NIL	2.5	0 - 7	E12613A	E12613B	E12613D	E12613G		
J013 - 02	2/2 NC	G1/4	G1/4	NIL	2	0 - 10	E12612A	E12612B	E12612D	E12612G		
J013 - 02	2/2 NC	G1/4	G1/4	NIL	1.2	0 - 20	E12611A	E12611B	E12611D	E12611G		
J002 - 04	3/2 NO	G1/8	G1/4	G1/4	2.5	0 - 7	E13613A	E13613B	E13613D	E13613G		
J002 - 04	3/2 NO	G1/8	G1/4	G1/4	2.0	0 - 10	E13612A	E13612B	E13612D	E13612G		
J002 - 04	3/2 NO	G1/8	G1/4	G1/4	1.2	0 - 20	E13611A	E13611B	E13611D	E13611G		
J003 - 04	3/2 NC	G1/4	G1/4	G1/8	2.5	0 - 7	E14613A	E14613B	E14613D	E14613G		
J003 - 04	3/2 NC	G1/4	G1/4	G1/8	2.0	0 - 10	E14612A	E14612B	E14612D	E14612G		
J003 - 04	3/2 NC	G1/4	G1/4	G1/8	1.2	0 - 20	E14611A	E14611B	E14611D	E14611G		
J004 - 04	3/2 Gang mounting NC	NIL	NIL	G1/8	2	0 - 10	E24002A E24002A - K	E24002B E24002B - K	E24002D E24002D - K	E24002G E24002G - K		Screw type manual adjuster Knob type manual adjuster
<b>Pilot operated valves</b>												
J005 - 05	3/2 Single pilot NO	G1/4	G1/4	G1/4	6	2 - 10	EL13615A EL13615A - K	EL13615B EL13615B - K	EL13615D EL13615D - K	EL13615G EL13615G - K	Screw type manual adjuster Knob type manual adjuster	
J006 - 05	3/2 Single pilot NC	G1/4	G1/4	G1/4	6	2 - 10	EL14615A EL14615A - K	EL14615B EL14615B - K	EL14615D EL14615D - K	EL14615G EL14615G - K	Screw type manual adjuster Knob type manual adjuster	
J007 - 05	3/2 Single pilot NO	G1/2	G1/2	G1/2	12	2 - 10	EL13637A EL13637A - K	EL13637B EL13637B - K	EL13637D EL13637D - K	EL13637G EL13637G - K	Screw type manual adjuster Knob type manual adjuster	
J008 - 05	3/2 Single pilot NC	G1/2	G1/2	G1/2	12	2 - 10	EL14637A EL14637A - K	EL14637B EL14637B - K	EL14637D EL14637D - K	EL14637G EL14637G - K	Screw type manual adjuster Knob type manual adjuster	
J009 - 05	5/2 Single pilot	G1/4	G1/4	G1/4	6	2 - 10	EL15615A EL15615A - K	EL15615B EL15615B - K	EL15615D EL15615D - K	EL15615G EL15615G - K	Screw type manual adjuster Knob type manual adjuster	
J010 - 05	5/2 Single pilot	G1/2	G1/2	G1/2	12	2 - 10	EL15637A EL15637A - K	EL15637B EL15637B - K	EL15637D EL15637D - K	EL15637G EL15637G - K	Screw type manual adjuster Knob type manual adjuster	
J011 - 05	5/2 Double pilot	G1/4	G1/4	G1/4	6	2 - 10	EL25615A EL25615A - K	EL25615B EL25615B - K	EL25615D EL25615D - K	EL25615G EL25615G - K	Screw type manual adjuster Knob type manual adjuster	
J012 - 05	5/2 Double pilot	G1/2	G1/2	G1/2	12	2 - 10	EL25637A EL25637A - K	EL25637B EL25637B - K	EL25637D EL25637D - K	EL25637G EL25637G - K	Screw type manual adjuster Knob type manual adjuster	

## DC

REF. CAT. NO.	TYPE OF VALVE	PORT SIZE			NW	Operating pressure range ( bar )	ORDERING NO. WITH COIL VOLTAGE OF (all coils are provided with DIN connector type socket S1)				Remarks	
		IN	OUT	EXH			DC					
							110 V	48 V	24 V	12 V		
<b>Direct acting valves</b>												
J001 - 04	2/2 NC	G1/4	G1/4	NIL	3.0	0 - 10	NIL	NIL	NIL	NIL		
J013 - 02	2/2 NC	G1/4	G1/4	NIL	2.5	0 - 7	E12613Q	E12613S	E12613W	E12613R		
J013 - 02	2/2 NC	G1/4	G1/4	NIL	2	0 - 10	E12612Q	E12612S	E12612W	E12612R		
J013 - 02	2/2 NC	G1/4	G1/4	NIL	1.2	0 - 20	E12611Q	E12611S	E12611W	E12611R		
J002 - 04	3/2 NO	G1/8	G1/4	G1/4	2.5	0 - 7	-	-	-	-		
J002 - 04	3/2 NO	G1/8	G1/4	G1/4	2.0	0 - 10	-	-	-	-		
J002 - 04	3/2 NO	G1/8	G1/4	G1/4	1.2	0 - 20	-	-	-	-		
J003 - 04	3/2 NC	G1/4	G1/4	G1/8	2.5	0 - 7	E14613Q	E14613S	E14613W	E14613R		
J003 - 04	3/2 NC	G1/4	G1/4	G1/8	2.0	0 - 10	E14612Q	E14612S	E14612W	E14612R		
J003 - 04	3/2 NC	G1/4	G1/4	G1/8	1.2	0 - 20	E14611Q	E14611S	E14611W	E14611R		
J004 - 04	3/2 Gang mounting NC	NIL	NIL	G1/8	2	0 - 10	E24002Q E24002Q - K	E24002S E24002S - K	E24002W E24002W - K	E24002R E24002R - K		Screw type manual adjuster Knob type manual adjuster
<b>Pilot operated valves</b>												
J005 - 05	3/2 Single pilot NO	G1/4	G1/4	G1/4	6	2 - 10	EL13615Q EL13615Q - K	EL13615S EL13615S - K	EL13615W EL13615W - K	EL13615R EL13615R - K	Screw type manual adjuster Knob type manual adjuster	
J006 - 05	3/2 Single pilot NC	G1/4	G1/4	G1/4	6	2 - 10	EL14615Q EL14615Q - K	EL14615S EL14615S - K	EL14615W EL14615W - K	EL14615R EL14615R - K	Screw type manual adjuster Knob type manual adjuster	
J007 - 05	3/2 Single pilot NO	G1/2	G1/2	G1/2	12	2 - 10	EL13637Q EL13637Q - K	EL13637S EL13637S - K	EL13637W EL13637W - K	EL13637R EL13637R - K	Screw type manual adjuster Knob type manual adjuster	
J008 - 05	3/2 Single pilot NC	G1/2	G1/2	G1/2	12	2 - 10	EL14637Q EL14637Q - K	EL14637S EL14637S - K	EL14637W EL14637W - K	EL14637R EL14637R - K	Screw type manual adjuster Knob type manual adjuster	
J009 - 05	5/2 Single pilot	G1/4	G1/4	G1/4	6	2 - 10	EL15615Q EL15615Q - K	EL15615S EL15615S - K	EL15615W EL15615W - K	EL15615R EL15615R - K	Screw type manual adjuster Knob type manual adjuster	
J010 - 05	5/2 Single pilot	G1/2	G1/2	G1/2	12	2 - 10	EL15637Q EL15637Q - K	EL15637S EL15637S - K	EL15637W EL15637W - K	EL15637R EL15637R - K	Screw type manual adjuster Knob type manual adjuster	
J011 - 05	5/2 Double pilot	G1/4	G1/4	G1/4	6	2 - 10	EL25615Q EL25615Q - K	EL25615S EL25615S - K	EL25615W EL25615W - K	EL25615R EL25615R - K	Screw type manual adjuster Knob type manual adjuster	
J012 - 05	5/2 Double pilot	G1/2	G1/2	G1/2	12	2 - 10	EL25637Q EL25637Q - K	EL25637S EL25637S - K	EL25637W EL25637W - K	EL25637R EL25637R - K	Screw type manual adjuster Knob type manual adjuster	



# SOLENOID VALVE - G1/4

J Series

Cat No J001 - 04

## 2 / 2 Direct acting normally closed valve

### Features

- Wide range of coil voltages.
- Continuous duty cycle.
- Low temperature of operation
- Noiseless performance
- Coil can be rotated by 360°

### Technical Specifications

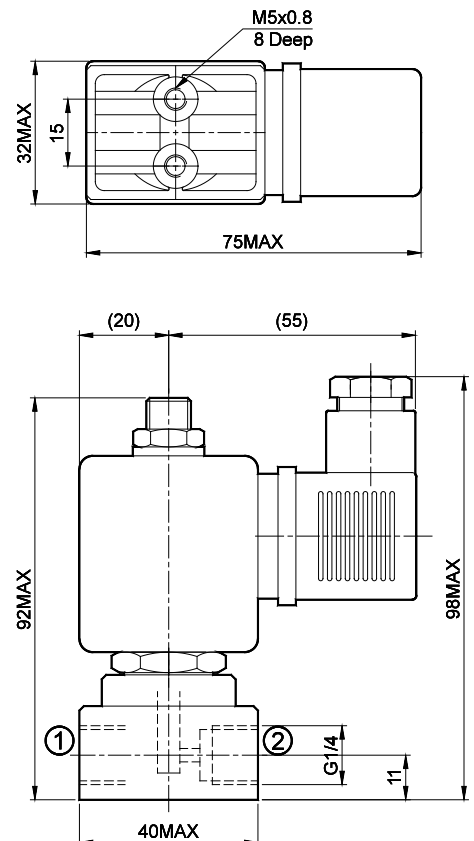
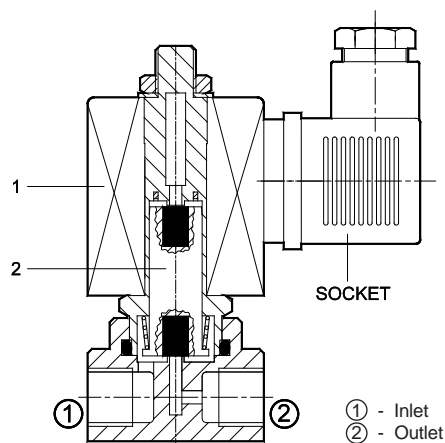
<b>Model #</b>	<b>E12614</b>
Port size	Inlet, Outlet - G1/4
Ambient Temperature	60°C Max.
Medium	Filtered compressed air
Orifice (NW)	3
Operating pressure (bar)	0 - 10 bar
Flow rate (lpm) *	250
<b>Electrical</b>	
Coil width	32 mm
Voltage (V) ± 10%	AC ( 50 Hz ) 24, 48, 110, 220
Power consumption (Watts)	6
Duty cycle	Continuous
Class of insulation	Class F
Type of coil protection	IP65
Materials of construction	Aluminium, Brass, Stainless steel, Nitrile

# For ordering refer page no.3.1.1

\* at 6 bar inlet, 5 bar outlet, with pressure drop  $\Delta p = 1$  bar

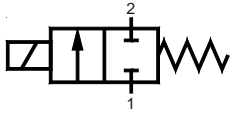
### Spare parts list

Ref. No.	Coil ( without socket )		Ordering no. for
	Voltage		
1	220		AC11A
	110		AC11B
	48		AC11D
	24		AC11G
2	<b>Moving core sub assembly complete</b> consists of 1. moving core subassembly 2. main spring		SSA0311



### Caution:

A.C coil should not be used on a D.C coil valve, and vice versa.



# SOLENOID VALVE - G1/4

## J Series

Cat No J013 - 02

### 2 / 2 Direct acting normally closed valve

#### Features

- Wide range of coil voltages.
- Continuous duty cycle.
- Low temperature of operation
- Noiseless performance
- Coil can be rotated by 360°.

#### Technical Specifications

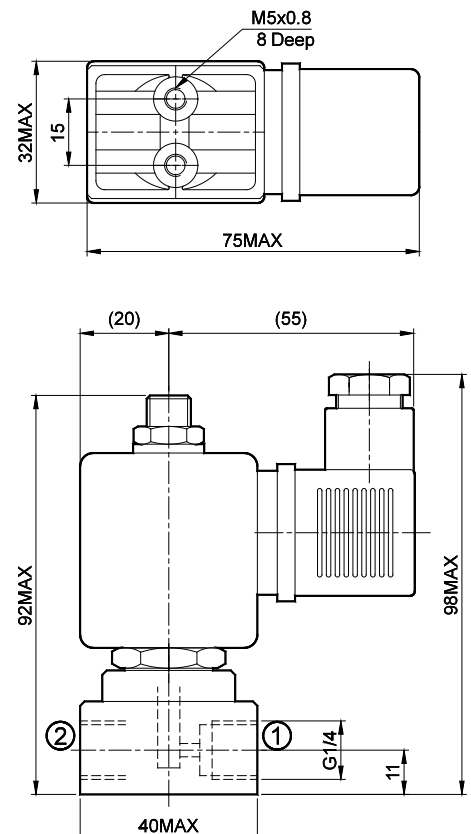
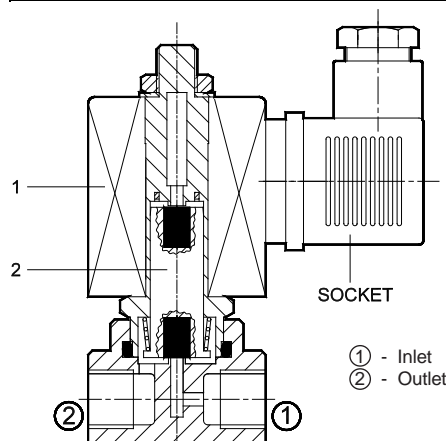
Model #	E12613	E12612	E12611
Port size	Inlet, Outlet - G1/4		
Ambient Temperature	60°c Max.		
Medium	Filtered compressed air		
Orifice (NW)	2.5	2	1.2
Operating pressure (bar)	0 - 7	0 - 10	0 - 20
Flow rate (lpm) *	180	140	60
<b>Electrical</b>			
Coil width	32 mm		
Voltage (V) ± 10%	AC ( 50 Hz )		DC
	24, 48, 110, 220	12	24, 48, 110
Power consumption (Watts)	6	9	8
Duty cycle	Continuous		
Type of coil protection	IP65		
Class of insulation	Class F		
Materials of construction	Aluminium, Brass, Stainless steel, Nitrile		

# For ordering refer page no.3.1.1

\* at 6 bar inlet, 5 bar outlet, with pressure drop  $\Delta p = 1$  bar

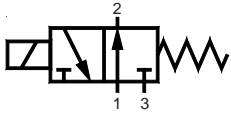
#### Spare parts list

Ref. No.	Coil ( without socket )	Ordering no. for	
		AC 50Hz	DC
1	220	AC11A	- NA -
	110	AC11B	DC12Q
	48	AC11D	DC12S
	24	AC11G	DC12W
	12	- NA -	DC15R
2	<b>Moving core sub assembly complete</b> consists of 1. moving core subassembly 2. main spring	SSA0311	SSA0711



#### Caution:

A.C coil should not be used on a D.C coil valve, and vice versa.



# SOLENOID VALVE - G1/4

## J Series

Cat No J002 - 04

### 3 / 2 Direct acting normally open valve

#### Features

- Wide range of coil voltages.
- Continuous duty cycle.
- Low temperature of operation
- Noiseless performance
- Coil can be rotated by 360°.

#### Technical Specifications

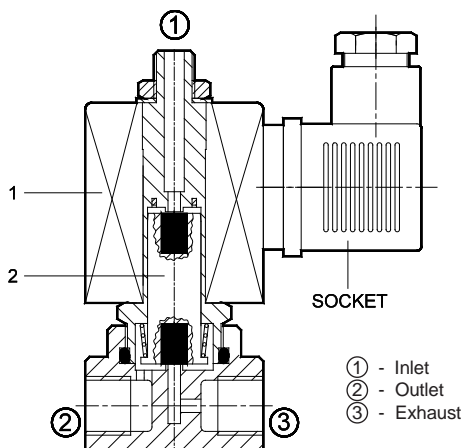
Model #	E13613	E13612	E13611
Port size	Inlet - G1/8, Outlet, Exhaust - G1/4		
Ambient Temperature	60°C Max.		
Medium	Filtered compressed air		
Orifice (NW)	2.5	2	1.2
Operating pressure (bar)	0 - 7	0 - 10	0 - 20
Flow rate (lpm) *	180	140	60
<b>Electrical</b>			
Coil width	32 mm		
Voltage (V) ± 10%	AC ( 50 Hz ) 24, 48, 110, 220		
Power consumption (Watts)	6		
Duty cycle	Continuous		
Type of coil protection	IP65		
Class of insulation	Class F		
Materials of construction	Aluminium, Brass, Stainless steel, Nitrile		

# For ordering refer page no.3.1.1

\* at 6 bar inlet, 5 bar outlet, with pressure drop  $\Delta p = 1$  bar

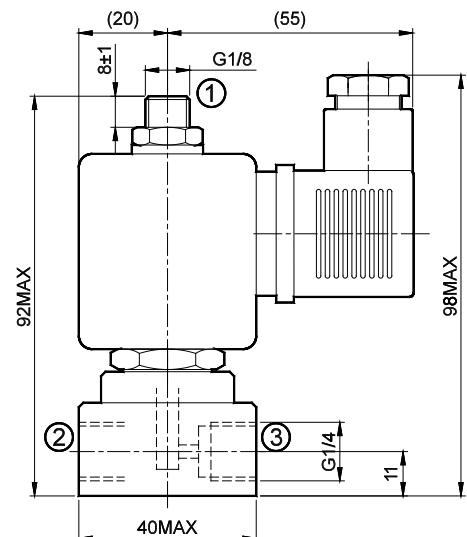
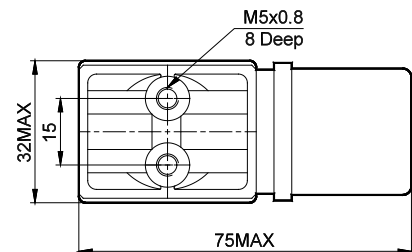
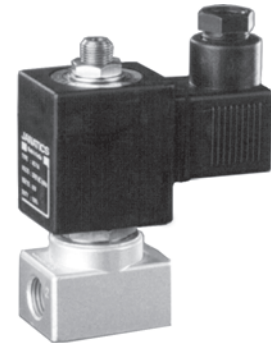
#### Spare parts list

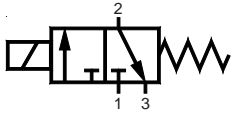
Ref. No.	Coil ( without socket )	Ordering no. for
	Voltage	AC 50Hz
1	220	AC11A
	110	AC11B
	48	AC11D
	24	AC11G
	12	- NA -
2	<b>Moving core sub assembly complete</b> consists of 1. moving core subassembly 2. main spring	SSA0411



#### Caution:

A.C coil should not be used on a D.C coil valve, and vice versa.





# SOLENOID VALVE - G1/4

## J Series

Cat No J003 - 04

### 3 / 2 Direct acting normally closed valve

#### Features

- Wide range of coil voltages.
- Continuous duty cycle.
- Low temperature of operation
- Noiseless performance
- Coil can be rotated by 360°.

#### Technical Specifications

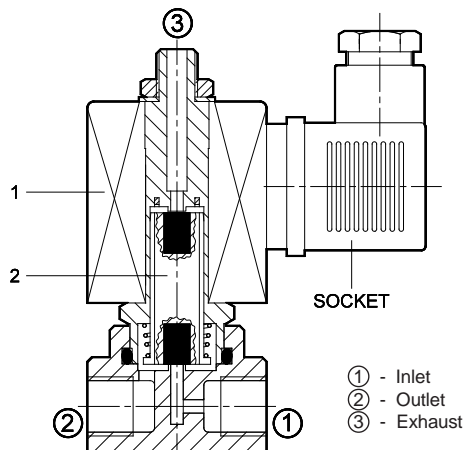
Model #	E14613	E14612	E14611
Port size	Inlet, Outlet - G1/4, Exhaust - G1/8		
Ambient Temperature	60°C Max.		
Medium	Filtered compressed air		
Orifice (NW)	2.5	2	1.2
Operating pressure (bar)	0 - 7	0 - 10	0 - 20
Flow rate (lpm) *	180	140	60
<b>Electrical</b>			
Coil width	32 mm		
Voltage (V) ± 10%	AC ( 50 Hz )		DC
	24, 48, 110, 220	12	24, 48, 110
Power consumption (Watts)	6	9	8
Duty cycle	Continuous		
Type of coil protection	IP65		
Class of insulation	Class F		
Materials of construction	Aluminium, Brass, Stainless steel, Nitrile		

# For ordering refer page no.3.1.1

\* at 6 bar inlet, 5 bar outlet, with pressure drop  $\Delta p = 1$  bar

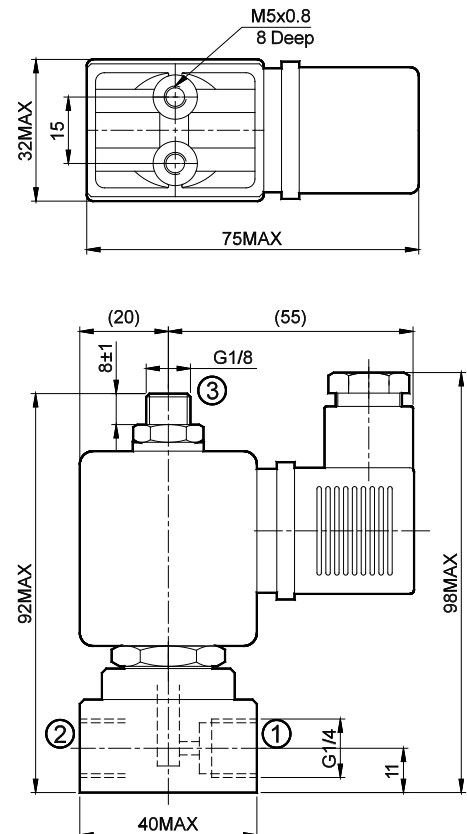
#### Spare parts list

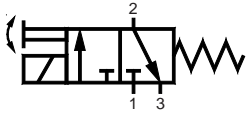
Ref. No.	Coil ( without socket )	Ordering no. for	
		AC 50Hz	DC
1	220	AC11A	- NA -
	110	AC11B	DC12Q
	48	AC11D	DC12S
	24	AC11G	DC12W
	12	- NA -	DC15R
2	<b>Moving core sub assembly complete</b> consists of 1. moving core subassembly 2. main spring	SSA0311	SSA0711



#### Caution:

A.C coil should not be used on a D.C coil valve, and vice versa.





# SOLENOID VALVE

## J Series

Cat No J004 - 04

### 3 / 2 Direct acting, normally closed, gang mounting valve

#### Features

- ❑ Gang mounting type ( Manifolds for gang mounting of 1 ,2, 5 & 9.valves are available - for details refer next page )
- ❑ Wide range of coil voltages.
- ❑ Continuous duty cycle.
- ❑ Low temperature of operation
- ❑ Noiseless performance
- ❑ Manual operator ( Screw driver type )

#### Technical Specifications

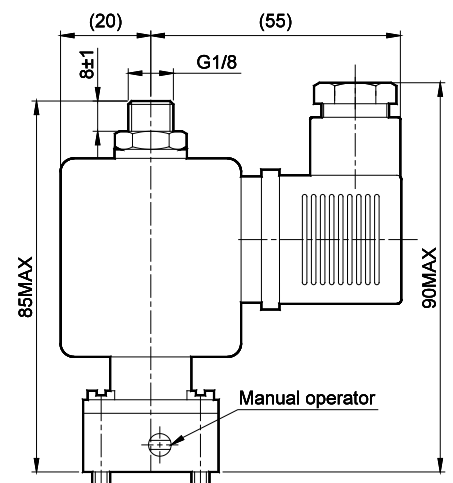
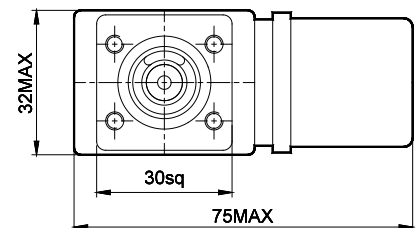
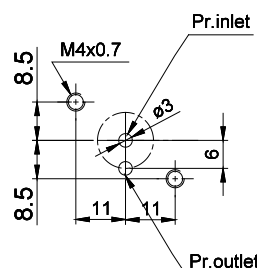
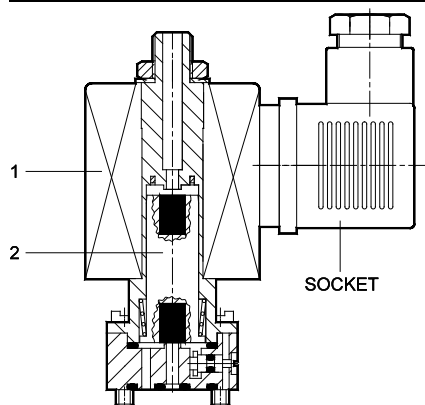
<b>Model #</b>	<b>E24002</b>		
Port size	Exhaust G1/8		
Ambient Temperature	60°C Max.		
Medium	Filtered compressed air		
Orifice (NW)	2		
Operating pressure range (bar)	0 - 10		
Flow rate (lpm) *	140		
<b>Electrical</b>			
Coil width	32 mm		
Voltage (V) ± 10%	AC ( 50 Hz )	DC	
	24, 48, 110, 220	12	24, 48, 110
Power consumption (Watts)	6	9	8
Duty cycle	Continuous		
Type of coil protection	IP65		
Class of insulation	Class F		
Materials of construction	Aluminium, Brass, Stainless steel, Nitrile		

# For ordering refer page no.3.1.1

\* at 6 bar inlet, 5 bar outlet, with pressure drop  $\Delta p = 1$  bar

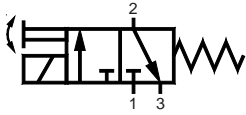
#### Spare parts list

Ref. No.	Coil ( without socket )	Ordering no. for	
		AC 50Hz	DC
1	220	AC11A	- NA -
	110	AC11B	DC12Q
	48	AC11D	DC12S
	24	AC11G	DC12W
	12	- NA -	DC15R
2	<b>Moving core sub assembly complete</b> consists of 1. moving core subassembly 2. main spring	SSA0311	SSA0711



#### Caution:

A.C coil should not be used on a D.C coil valve, and vice versa.



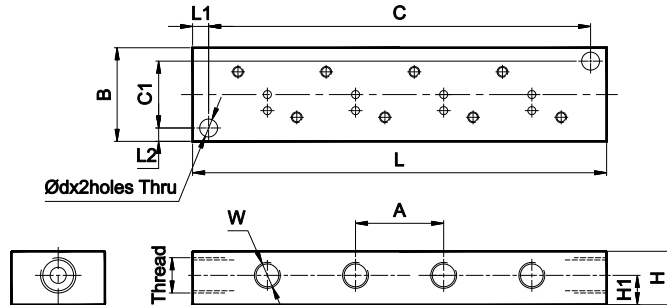
# SOLENOID VALVE

## J Series

Cat No J004 - 04

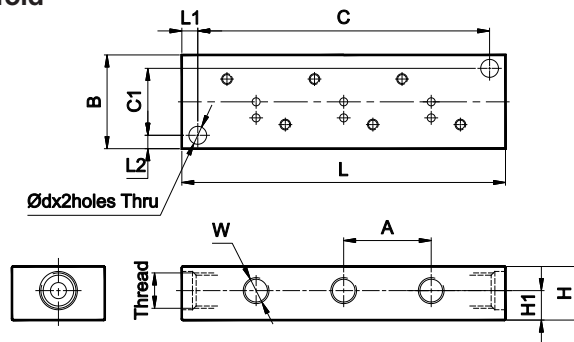
### Manifold for Gang Mounting Valves

#### Plug type manifold



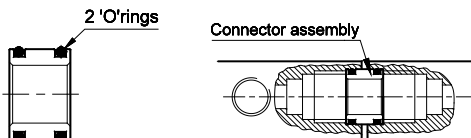
Part Name	Thread	W	B	C	C1	A	Ød	L	L1	L2	H	H1	Ordering no.
Four valves	G1/4	G1/8	35	143	25	33	6.7	155	6	5	20	11	LA3029
Six valves	G1/4	G1/8	35	209	25	33	6.7	221	6	5	20	11	LA3030
Nine valves	G1/4	G1/8	35	308	25	33	6.7	320	6	5	20	11	42312

#### Connector type manifold



Part Name	Thread	W	B	C	C1	A	Ød	L	L1	L2	H	H1	Ordering no.
One valve	G1/4	G1/8	35	44	25	-	6.7	56	6	5	20	11	42080
Two valves	G1/4	G1/8	35	77	25	33	6.7	89	6	5	20	11	42070
Three valves	G1/4	G1/8	35	110	25	33	6.7	122	6	5	20	11	LA3035
Five valves	G1/4	G1/8	35	176	25	33	6.7	188	6	5	20	11	42069

#### Connector assembly

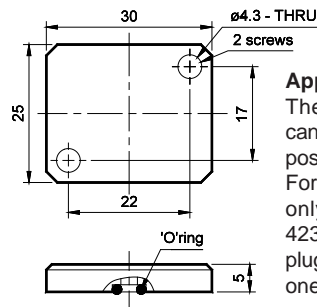


#### Application:

These connector assemblies can be used to connect two manifolds. For eg., 2 no's of manifolds to Model no. 42080 can be connected together. This is applicable for the connector type manifold only.

Part Name	Ordering no.
Connector assembly	MS001
Cover plate assembly	MS002

#### Cover plate assembly



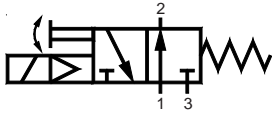
#### Application:

These cover plate assemblies can be used to plug the unutilised position in a manifold. For eg., if it is required to mount only 8 valves on manifold no. 42312, the 9th position can be plugged and made dummy using one cover plate assembly.

### How to Order

While ordering valve, mention the ordering number given in the corresponding tables.





# SOLENOID VALVE - G1/4

## J Series

Cat No J005 - 05

### 3 / 2 Pilot operated normally open valve

#### Features

- Diaphragm operated poppet seat type.
- Wide range of coil voltages.
- Continuous duty cycle.
- Low temperature of operation
- Manual operator ( Screw driver type )
- Noiseless performance
- Good flow characteristics.



#### Technical Specifications

<b>Model #</b>	<b>EL13615</b>		
Port size	Inlet, Outlet, Exhaust - G1/4		
Ambient Temperature	60°C Max.		
Medium	Filtered compressed air		
Orifice (NW)	6		
Operating pressure range (bar)	2 - 10		
Cv value	0.65		
Flow rate (lpm) *	650		
<b>Electrical</b>			
Coil width	32 mm		
Voltage (V) ± 10%	AC ( 50 Hz )	DC	
	24, 48, 110, 220	12	24, 48, 110
Power consumption (Watts)	6	9	8
Duty cycle	Continuous		
Type of coil protection	IP65		
Class of insulation	Class F		
Materials of construction	Aluminium, Brass, Stainless steel, Nitrile		

# For ordering refer page no.3.1.1

\* at 6 bar inlet, 5 bar outlet, with pressure drop  $\Delta p = 1$  bar

#### Spare parts list

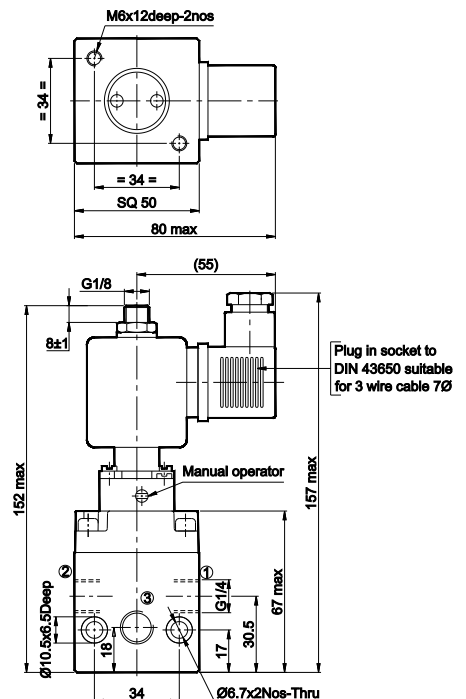
Ref. No.	Coil ( without socket )	Ordering no. for	
		AC	DC
1	220	AC11A	- NA -
	110	AC11B	DC12Q
	48	AC11D	DC12S
	24	AC11G	DC12W
	12	- NA -	DC15R
2	<b>Moving core sub assembly complete</b> consists of 1. moving core subassembly 2. main spring	SSA0311	SSA0711
3	<b>Solenoid valve sub assembly complete</b> ( without coil ) Consists of 1. Solenoid valve sub assembly 2. Screws – 2 no's 3. 'O' rings – 2 no's	E24001-A	E24001-D
	<b>Seal kit</b> consists of all rubber items for the main valve (4)	SK3611	

#### Caution:

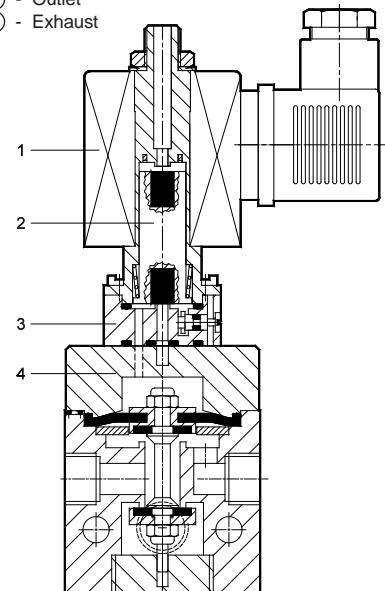
##### A. To ensure proper functioning

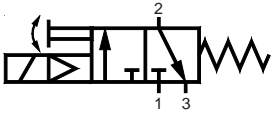
1. Please ensure that inlet port is connected to tubing of 6 mm ID minimum from the compressor air source.
2. Exhaust should not be restricted.

##### B. A.C coil should not be used on a D.C coil valve, and vice versa.



- ① - Inlet
- ② - Outlet
- ③ - Exhaust





# SOLENOID VALVE - G1/4

## J Series

Cat No J006 - 05

### 3 / 2 Pilot operated normally closed valve

#### Features

- Diaphragm operated poppet seat type.
- Wide range of coil voltages.
- Continuous duty cycle.
- Low temperature of operation
- Manual operator ( Screw driver type )
- Noiseless performance
- Good flow characteristics.



#### Technical Specifications

<b>Model #</b>	<b>EL14615</b>		
Port size	Inlet, Outlet, Exhaust - G1/4		
Ambient Temperature	60°C Max.		
Medium	Filtered compressed air		
Orifice (NW)	6		
Operating pressure range (bar)	2 – 10		
Cv value	0.65		
Flow rate (lpm) *	650		
<b>Electrical</b>			
Coil width	32 mm		
Voltage (V) ± 10%	AC ( 50 Hz )	DC	
	24, 48, 110, 220	12	24, 48, 110
Power consumption (Watts)	6	9	8
Duty cycle	Continuous		
Type of coil protection	IP65		
Class of insulation	Class F		
Materials of construction	Aluminium, Brass, Stainless steel, Nitrile		

# For ordering refer page no.3.1.1

\* at 6 bar inlet, 5 bar outlet, with pressure drop Δp = 1 bar

#### Spare parts list

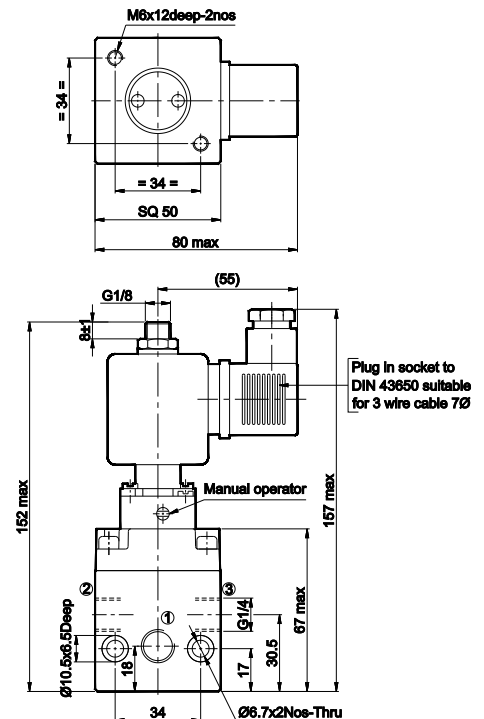
Ref. No.	Coil ( without socket )	Ordering no. for	
	Voltage	AC	DC
1	220	AC11A	- NA -
	110	AC11B	DC12Q
	48	AC11D	DC12S
	24	AC11G	DC12W
	12	- NA -	DC15R
2	<b>Moving core sub assembly complete</b> consists of 1. moving core subassembly 2. main spring	SSA0311	SSA0711
3	<b>Solenoid valve sub assembly complete</b> ( without coil ) Consists of 1. Solenoid valve sub assembly 2. Screws – 2 no's 3. 'O' rings – 2 no's	E24001-A	E24001-D
	<b>Seal kit</b> consists of all rubber items for the main valve (4)	SK3611	

#### Caution:

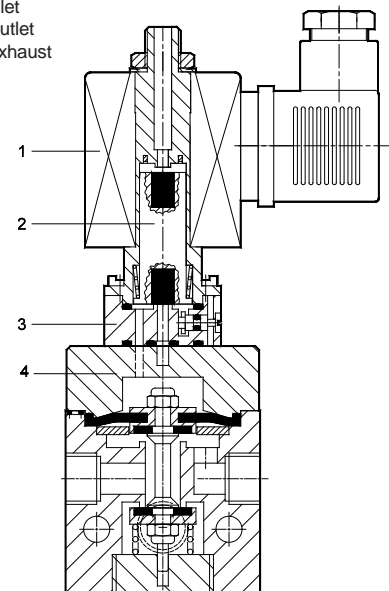
##### A. To ensure proper functioning

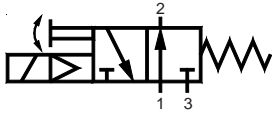
1. Please ensure that inlet port is connected to tubing of 6 mm ID minimum from the compressor air source.
2. Exhaust should not be restricted.

##### B. A.C coil should not be used on a D.C coil valve, and vice versa.



- ① - Inlet
- ② - Outlet
- ③ - Exhaust





# SOLENOID VALVE - G1/2

## J Series

Cat No J007 - 05

### 3 / 2 Pilot operated normally open valve

#### Features

- ❑ Diaphragm operated poppet seat type.
- ❑ Wide range of coil voltages.
- ❑ Continuous duty cycle.
- ❑ Low temperature of operation
- ❑ Manual operator ( Screw driver type )
- ❑ Noiseless performance
- ❑ Good flow characteristics.



#### Technical Specifications

<b>Model #</b>	<b>EL13637</b>		
<b>Port size</b>	Inlet, Outlet, Exhaust - G1/2		
<b>Ambient Temperature</b>	60°C Max.		
<b>Medium</b>	Filtered compressed air		
<b>Orifice (NW)</b>	12		
<b>Operating pressure range (bar)</b>	2 - 10		
<b>Cv value</b>	3		
<b>Flow rate (lpm) *</b>	3000		
<b>Electrical</b>			
<b>Coil width</b>	32 mm		
<b>Voltage (V) ± 10%</b>	AC ( 50 Hz ) 24, 48, 110, 220	DC 12, 24, 48, 110	
<b>Power consumption (Watts)</b>	6	9	8
<b>Duty cycle</b>	Continuous		
<b>Type of coil protection</b>	IP65		
<b>Class of insulation</b>	Class F		
<b>Materials of construction</b>	Aluminium, Brass, Stainless steel, Nitrile		

# For ordering refer page no.3.1.1

\* at 6 bar inlet, 5 bar outlet, with pressure drop  $\Delta p = 1$  bar

#### Spare parts list

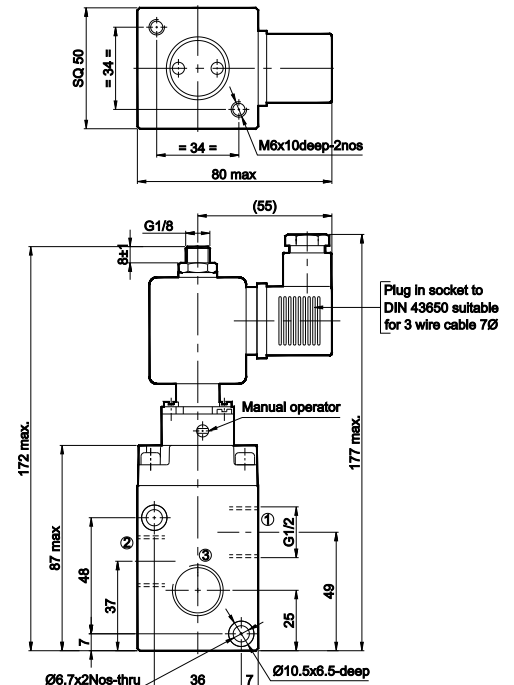
Ref. No.	Coil ( without socket )	Ordering no. for	
		AC	DC
1	220	AC11A	- NA -
	110	AC11B	DC12Q
	48	AC11D	DC12S
	24	AC11G	DC12W
	12	- NA -	DC15R
2	<b>Moving core sub assembly complete</b> consists of 1. moving core subassembly 2. main spring	SSA0311	SSA0711
3	<b>Solenoid valve sub assembly complete</b> ( without coil ) Consists of 1. Solenoid valve sub assembly 2. Screws – 2 no's 3. 'O'rings – 2 no's	E24001-A	E24001-D
	<b>Seal kit</b> consists of all rubber items for the main valve (4)	SK3631	

#### Caution:

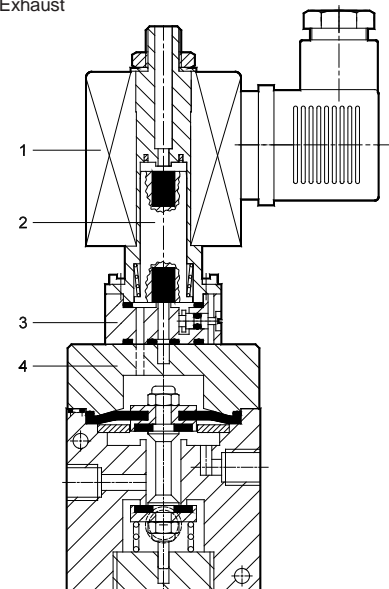
##### A. To ensure proper functioning

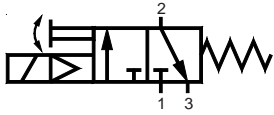
1. Please ensure that inlet port is connected to tubing of 10 mm ID minimum from the compressor air source.
2. Exhaust should not be restricted.

##### B. A.C coil should not be used on a D.C coil valve, and vice versa.



- ① - Inlet
- ② - Outlet
- ③ - Exhaust





# SOLENOID VALVE - G1/2

## J Series

Cat No J008 - 05

### 3 / 2 Pilot operated normally closed valve

#### Features

- Diaphragm operated poppet seat type.
- Wide range of coil voltages.
- Continuous duty cycle.
- Low temperature of operation
- Manual operator ( Screw driver type )
- Noiseless performance
- Good flow characteristics.



#### Technical Specifications

<b>Model #</b>	<b>EL14637</b>		
Port size	Inlet, Outlet, Exhaust - G1/2		
Ambient Temperature	60°C Max.		
Medium	Filtered compressed air		
Orifice (NW)	12		
Operating pressure range (bar)	2 - 10		
Cv value	3		
Flow rate (lpm) *	3000		
<b>Electrical</b>			
Coil width	32 mm		
Voltage (V) ± 10%	AC ( 50 Hz )	DC	
	24, 48, 110, 220	12	24, 48, 110
Power consumption (Watts)	6	9	8
Duty cycle	Continuous		
Type of coil protection	IP65		
Class of insulation	Class F		
Materials of construction	Aluminium, Brass, Stainless steel, Nitrile		

# For ordering refer page no.3.1.1

\* at 6 bar inlet, 5 bar outlet, with pressure drop  $\Delta p = 1$  bar

#### Spare parts list

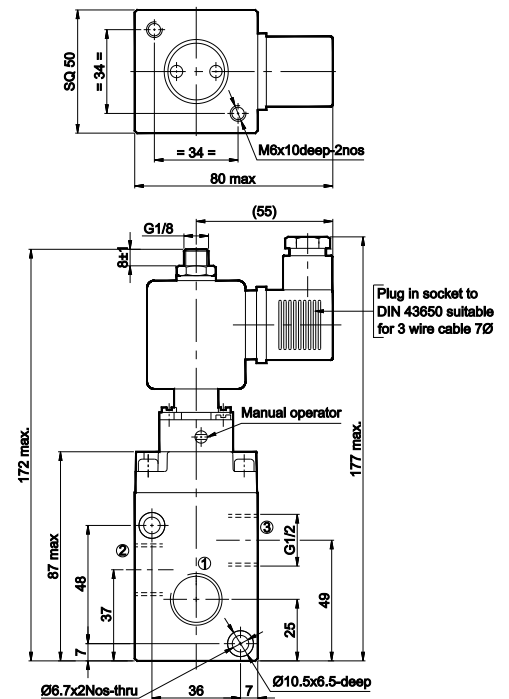
Ref. No.	Coil ( without socket )	Ordering no. for	
	Voltage	AC	DC
1	220	AC11A	- NA -
	110	AC11B	DC12Q
	48	AC11D	DC12S
	24	AC11G	DC12W
	12	- NA -	DC15R
2	<b>Moving core sub assembly complete</b> consists of 1. moving core subassembly 2. main spring	SSA0311	SSA0711
3	<b>Solenoid valve sub assembly complete</b> ( without coil ) Consists of 1. Solenoid valve sub assembly 2. Screws – 2 no's 3. O'rings – 2 no's	E24001-A	E24001-D
	<b>Seal kit</b> consists of all rubber items for the main valve (4)	SK3631	

#### Caution:

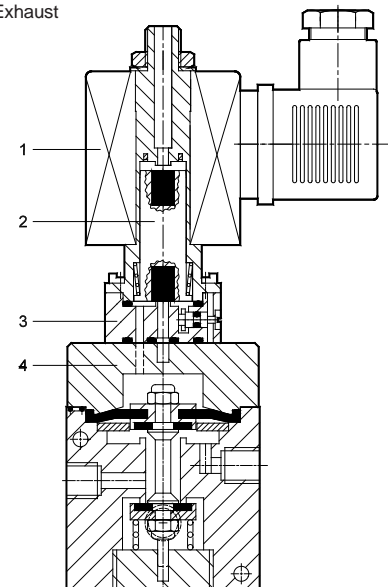
##### A. To ensure proper functioning

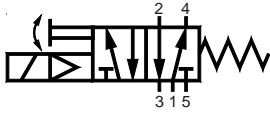
1. Please ensure that inlet port is connected to tubing of 10 mm ID minimum from the compressor air source.
2. Exhaust should not be restricted.

##### B. A.C coil should not be used on a D.C coil valve, and vice versa.



- ① - Inlet
- ② - Outlet
- ③ - Exhaust





# SOLENOID VALVE - G1/4

## J Series

Cat No J009 - 06

### 5 / 2 Single solenoid pilot operated valve

#### Features

- ❑ Diaphragm operated poppet seat type.
- ❑ Wide range of coil voltages.
- ❑ Continuous duty cycle.
- ❑ Low temperature of operation
- ❑ Manual operator ( Screw driver type )
- ❑ Noiseless performance
- ❑ Good flow characteristics.



#### Technical Specifications

<b>Model #</b>	<b>EL15615</b>		
<b>Port size</b>	Inlet, Outlet, Exhaust - G1/4		
<b>Ambient Temperature</b>	60° C Max.		
<b>Medium</b>	Filtered compressed air		
<b>Orifice (NW)</b>	6		
<b>Operating pressure range (bar)</b>	2 - 10		
<b>Flow rate (lpm) *</b>	1100		
<b>Electrical</b>			
<b>Coil width</b>	32 mm		
<b>Voltage (V) ± 10%</b>	AC ( 50 Hz ) 24, 48, 110, 220	DC 12, 24, 48, 110	
<b>Power consumption (Watts)</b>	6	9	8
<b>Duty cycle</b>	Continuous		
<b>Type of coil protection</b>	IP65		
<b>Class of insulation</b>	Class F		
<b>Materials of construction</b>	Aluminium, Brass, Stainless steel, Nitrile		

# For ordering refer page no.3.1.1

\* at 6 bar inlet, 5 bar outlet, with pressure drop  $\Delta p = 1$  bar

#### Spare parts list

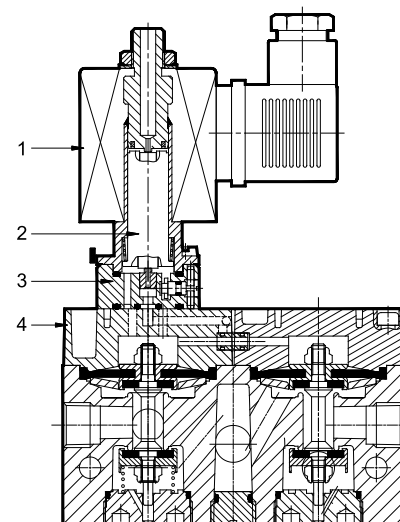
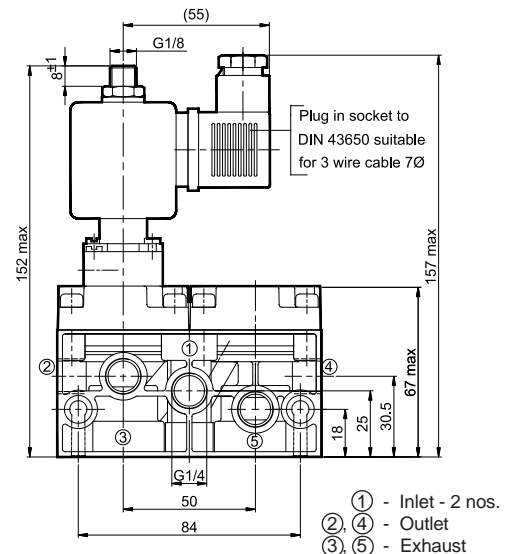
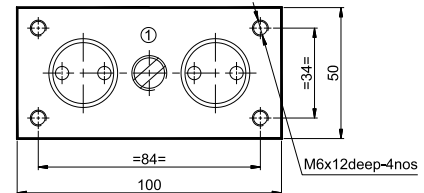
Ref. No.	Coil ( without socket )	Ordering no. for	
	Voltage	AC	DC
1	220	AC11A	- NA -
	110	AC11B	DC12Q
	48	AC11D	DC12S
	24	AC11G	DC12W
	12	- NA -	DC15R
2	<b>Moving core sub assembly complete</b> consists of 1. moving core subassembly 2. main spring	SSA0311	SSA0711
3	<b>Solenoid valve sub assembly complete</b> ( without coil ) Consists of 1. Solenoid valve sub assembly 2. Screws – 2 no's 3. 'O' rings – 2 no's	E24001-A	E24001-D
	<b>Seal kit</b> consists of all rubber items for the main valve (4)	SK5611	

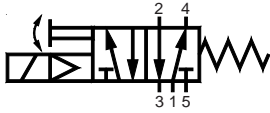
#### Caution:

##### A. To ensure proper functioning

1. Please ensure that inlet port is connected to tubing of 6 mm ID minimum from the compressor air source.
2. Exhaust should not be restricted.

##### B. A.C coil should not be used on a D.C coil valve, and vice versa.





# SOLENOID VALVE - G1/2

## J Series

Cat No J010 - 05

### 5 / 2 Single solenoid pilot operated valve

#### Features

- ❑ Diaphragm operated poppet seat type.
- ❑ Wide range of coil voltages.
- ❑ Continuous duty cycle.
- ❑ Low temperature of operation
- ❑ Manual operator ( Screw driver type )
- ❑ Noiseless performance
- ❑ Good flow characteristics.



#### Technical Specifications

<b>Model #</b>	<b>EL15637</b>		
<b>Port size</b>	Inlet, Outlet, Exhaust - G1/2		
<b>Ambient Temperature</b>	60°C Max.		
<b>Medium</b>	Filtered compressed air		
<b>Orifice (NW)</b>	12		
<b>Operating pressure (bar)</b>	2 - 10		
<b>Cv value</b>	3		
<b>Flow rate (lpm) *</b>	3000		
<b>Electrical</b>			
<b>Coil width</b>	32 mm		
<b>Voltage (V) ± 10%</b>	AC ( 50 Hz ) 24, 48, 110, 220	DC 12, 24, 48, 110	
<b>Power consumption (Watts)</b>	6	9	8
<b>Duty cycle</b>	Continuous		
<b>Type of coil protection</b>	IP65		
<b>Class of insulation</b>	Class F		
<b>Materials of construction</b>	Aluminium, Brass, Stainless steel, Nitrile		

# For ordering refer page no.3.1.1

\* at 6 bar inlet, 5 bar outlet, with pressure drop Δp = 1 bar

#### Spare parts list

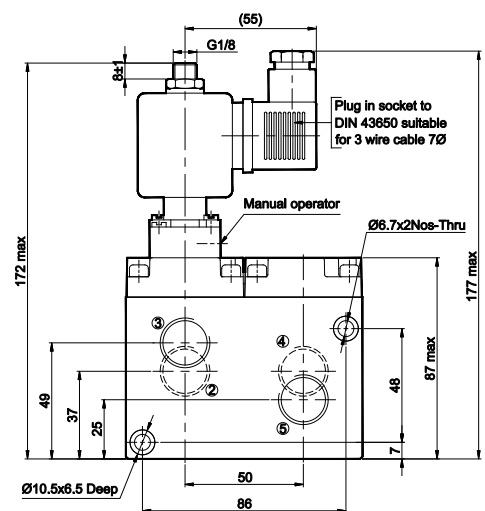
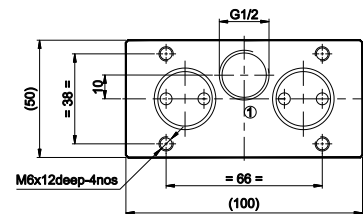
Ref. No.	Coil ( without socket )	Ordering no. for	
		AC	DC
1	220	AC11A	- NA -
	110	AC11B	DC12Q
	48	AC11D	DC12S
	24	AC11G	DC12W
	12	- NA -	DC15R
2	<b>Moving core sub assembly complete</b> consists of 1. moving core subassembly 2. main spring	SSA0311	SSA0711
3	<b>Solenoid valve sub assembly complete</b> ( without coil ) Consists of 1. Solenoid valve sub assembly 2. Screws – 2 no's 3. O'rings – 2 no's	E24001-A	E24001-D
	<b>Seal kit</b> consists of all rubber items for the main valve (4)	SK5631	

#### Caution:

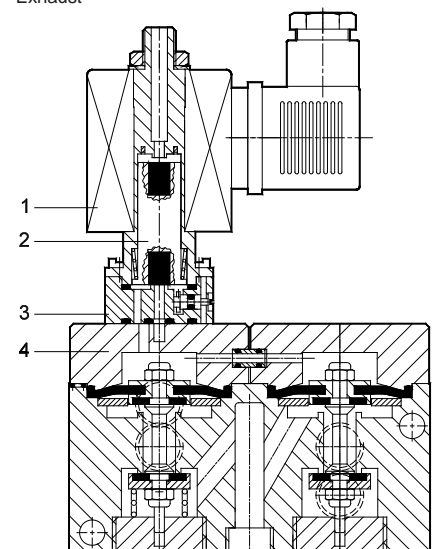
##### A. To ensure proper functioning

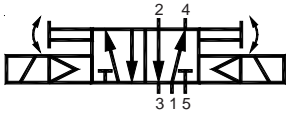
1. Please ensure that inlet port is connected to tubing of 10 mm ID minimum from the compressor air source.
2. Exhaust should not be restricted.

##### B. A.C coil should not be used on a D.C coil valve, and vice versa.



- ① - Inlet
- ② ④ - Outlet
- ③ ⑤ - Exhaust





# SOLENOID VALVE - G1/4

## J Series

Cat No J011 - 06

### 5 / 2 Double solenoid pilot operated valve

#### Features

- ❑ Diaphragm operated poppet seat type.
- ❑ Wide range of coil voltages.
- ❑ Continuous duty cycle.
- ❑ Low temperature of operation
- ❑ Manual operator ( Screw driver type )
- ❑ Noiseless performance
- ❑ Good flow characteristics.



#### Technical Specifications

<b>Model #</b>	<b>EL25615</b>		
<b>Port size</b>	Inlet, Outlet, Exhaust - G1/4		
<b>Ambient Temperature</b>	60° C Max.		
<b>Medium</b>	Filtered, Lubricated compressed air		
<b>Orifice (NW)</b>	6		
<b>Operating pressure range (bar)</b>	2 - 10		
<b>Flow rate (lpm) *</b>	1200		
<b>Electrical</b>			
<b>Coil width</b>	32 mm		
<b>Voltage (V) ± 10%</b>	AC ( 50 Hz ) 24, 48, 110, 220	DC 12      24, 48, 110	
<b>Power consumption (Watts)</b>	6	9	8
<b>Duty cycle</b>	Continuous		
<b>Type of coil protection</b>	IP65		
<b>Class of insulation</b>	Class F		
<b>Materials of construction</b>	Aluminium, Brass, Stainless steel, Nitrile		

# For ordering refer page no.3.1.1

\* at 6 bar inlet, 5 bar outlet, with pressure drop Δp = 1 bar

#### Spare parts list

Ref. No.	Coil ( without socket )	Ordering no. for		
		Voltage	AC	DC
1		220	AC11A	- NA -
		110	AC11B	DC12Q
		48	AC11D	DC12S
		24	AC11G	DC12W
		12	- NA -	DC15R
2	<b>Moving core sub assembly complete</b> consists of 1. moving core subassembly 2. main spring	SSA0311	SSA0711	
3	<b>Solenoid valve sub assembly complete</b> ( without coil ) Consists of 1. Solenoid valve sub assembly 2. Screws – 2 no's 3. 'O'rings – 2 no's	E22001-A	E22001-D	
	<b>Seal kit</b> consists of all rubber items for the main valve (4)	SK5611		

#### Caution:

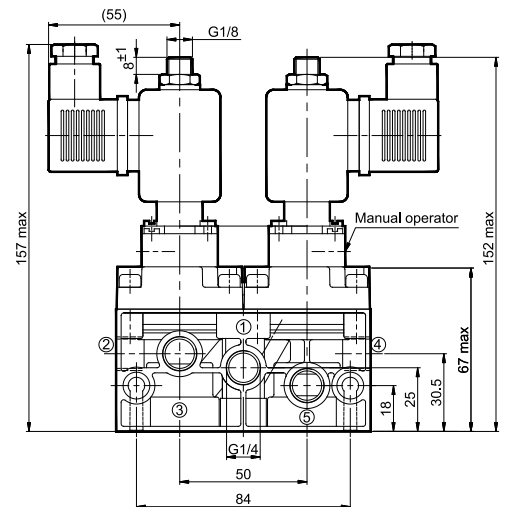
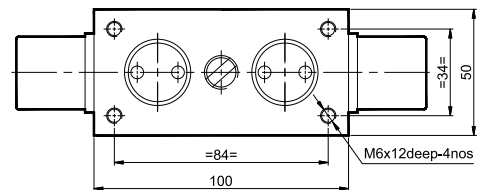
##### A. To ensure proper functioning

1. Please ensure that inlet port is connected to tubing of 6 mm ID minimum from the compressor air source.
2. Exhaust should not be restricted.

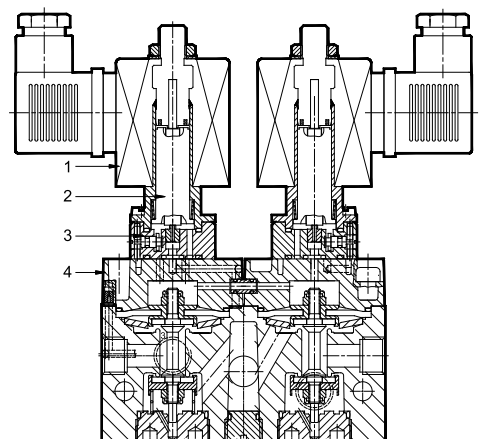
##### B. Stay put function

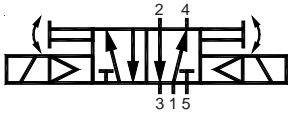
When the valve is in operation, it will be in stay out condition even if the power fails, provided the inlet pressure remains above 2 bar.

##### C. A.C coil should not be used on a D.C coil valve, and vice versa.



- ① - Inlet - 2 nos.
- ②, ④ - Outlet
- ③, ⑤ - Exhaust





# SOLENOID VALVE - G1/2

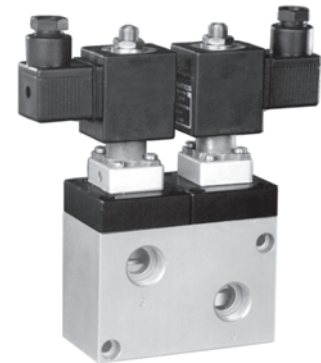
## J Series

Cat No J012 - 05

### 5 / 2 Double solenoid pilot operated valve

#### Features

- ❑ Diaphragm operated poppet seat type.
- ❑ Wide range of coil voltages.
- ❑ Continuous duty cycle.
- ❑ Low temperature of operation
- ❑ Manual operator ( Screw driver type )
- ❑ Noiseless performance
- ❑ Good flow characteristics.



#### Technical Specifications

<b>Model #</b>	<b>EL25637</b>		
Port size	Inlet, Outlet, Exhaust - G1/2		
Ambient Temperature	60°C Max.		
Medium	Filtered , Lubricated compressed air		
Orifice (NW)	12		
Operating pressure range (bar)	2 - 10		
Cv value	3		
Flow rate (lpm) *	3000		
<b>Electrical</b>			
Coil width	32 mm		
Voltage (V) ± 10%	AC ( 50 Hz )	DC	
	24, 48, 110, 220	12	24, 48, 110
Power consumption (Watts)	6	9	8
Duty cycle	Continuous		
Type of coil protection	IP65		
Class of insulation	Class F		
Materials of construction	Aluminium, Brass, Stainless steel, Nitrile		

# For ordering refer page no.3.1.1

\* at 6 bar inlet, 5 bar outlet, with pressure drop  $\Delta p = 1$  bar

#### Spare parts list

Ref. No.	Coil ( without socket )	Ordering no. for	
	Voltage	AC	DC
1	220	AC11A	- NA -
	110	AC11B	DC12Q
	48	AC11D	DC12S
	24	AC11G	DC12W
	12	- NA -	DC15R
2	<b>Moving core sub assembly complete</b> consists of 1. moving core subassembly 2. main spring		SSA0311      SSA0711
3	<b>Solenoid valve sub assembly complete</b> ( without coil ) Consists of 1. Solenoid valve sub assembly 2. Screws – 2 no's 3. 'O' rings – 2 no's		E22001-A      E22001-D
	<b>Seal kit</b> consists of all rubber items for the main valve (4)	SK5632	

#### Caution:

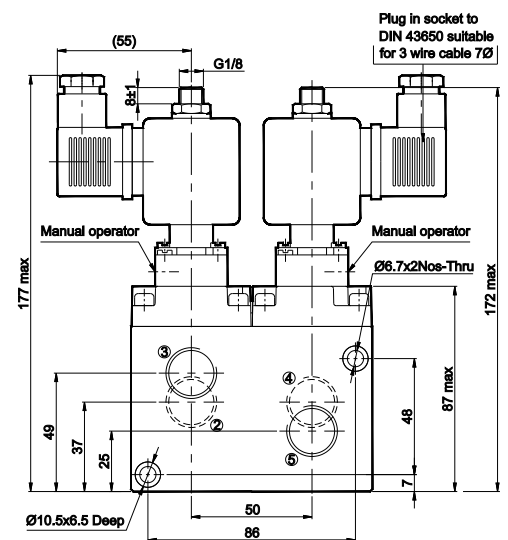
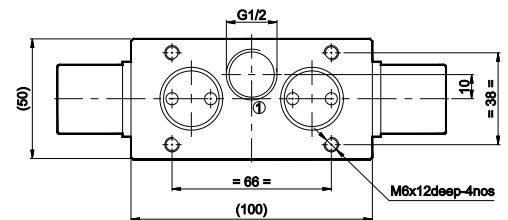
##### A. To ensure proper functioning

1. Please ensure that inlet port is connected to tubing of 10 mm ID minimum from the compressor air source.
2. Exhaust should not be restricted.

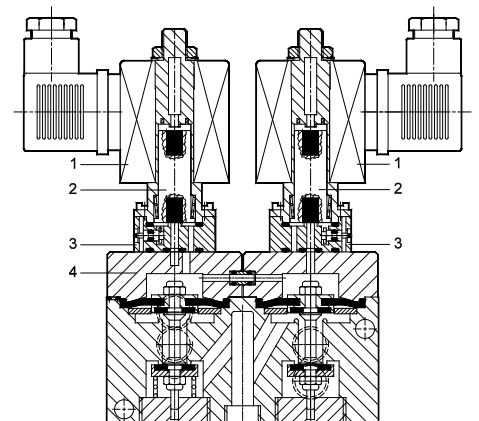
##### B. Stay put function

When the valve is in operation, it will be in stay out condition even if the power fails, provided the inlet pressure remains above 2 bar.

##### C. A.C coil should not be used on a D.C coil valve, and vice versa.



- ① - Inlet
- ②, ④ - Outlet
- ③, ⑤ - Exhaust





# SOLENOID VALVE

## J Series

### How to order

#### 1. Solenoid valve + “ Connectors without LED ”

While ordering Solenoid operated valves, please mention the suffix given below along with the model number to indicate the required voltage

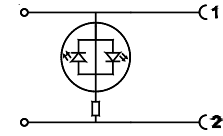
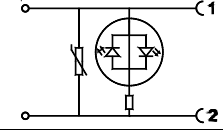
A	220V AC	Q	110V D C
B	110V AC	S	48V D C
D	48V AC	W	24V D C
G	24V AC	R	12V D C

#### Example

- The ordering no. for 3 / 2 pilot operated NC valve with 24V D.C coil is **EL14615-W**
- The ordering no. for 3 / 2 pilot operated NC valve with 24V D.C coil with Moulded cable is **EL14615-W1**

#### 2. Solenoid valve + “ Connectors with LED ”

While ordering Solenoid operated valves with LED connectors, given below in the corresponding tables.

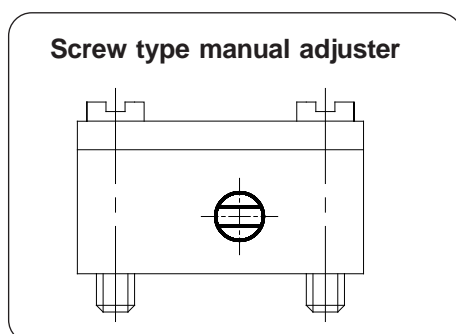
Voltage		Housing Colour & Indication		LED colour		Connection type	
A	220V AC	T0		R	Red	0	PG Cable entry
G	24V AC		Transparent housing with Bipolar LED indicator confirming supply voltage	1	Moulded cable (with 2metre length)		
W	24V DC	T1					
			Transparent housing with Bipolar LED indicator confirming supply voltage plus varistor to give over voltage protection to the source and load				

#### Example

The ordering no. for 3 / 2 pilot operated NC valve with 24V D.C, connectors with LED of Transparent colour housing with Bipolar LED and varistor with moulded cable : **EL14615-WT1R1**

### Example

The ordering no. for 3 / 2 pilot operated NC valve with 24V D.C coil is **EL14615W** with screw type manual adjuster (Standard model)



### Knob type manual adjuster

The ordering no. for 3 / 2 pilot operated NC valve with 24V D.C coil is **EL14615W - K** with knob type manual adjuster

