

QUICK EXHAUST VALVE

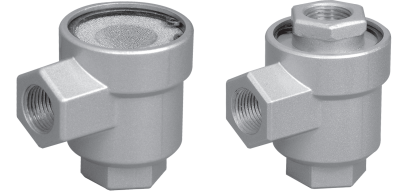
Series GQ

Cat No GQ - 01 - 01

QUICK EXHAUST VALVE - M5, G1/8, G1/4, G3/8, G1/2

Features

- ❑ Increase the speed of the cylinder
- ❑ With / without silencer
- ❑ Connection - M5, G1/8, G1/4, G3/8, G1/2
- ❑ Type GQ01 series is with silencer to reduce the exhaust noise



Function

These Quick exhaust valves when fitted to cylinder ports will result in increased speed of the cylinder. The exhaust air is directly connected to atmosphere through a bigger hole, instead of exhaust air going through the directional valve.

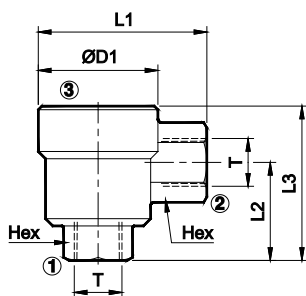
Technical Specifications

Type		Silencer type					Plug type				
Model		M5	G1/8	G1/4	G3/8	G1/2	M5	G1/8	G1/4	G3/8	G1/2
Medium		Compressed air - Dry, Filtered, Lubricated									
Flow @ (lpm)	1 → 2	80	350	1200	3250	4300	80	350	1200	3250	4300
	2 → 3 **	300	1000	3000	5500	9000	150	800	2000	3250	4750
Exhaust noise (db)		80	86	85	83	86	---				
Operating pressure range (bar)		1 to 10		0.5 to 10			1 to 10		0.5 to 10		
Ambient temperature		5° - 60° C									
Materials of construction		Aluminium, Nitrile, Brass, Acetal, Zinc									

@ Inlet pressure 6 bar, and pressure drop 1 bar

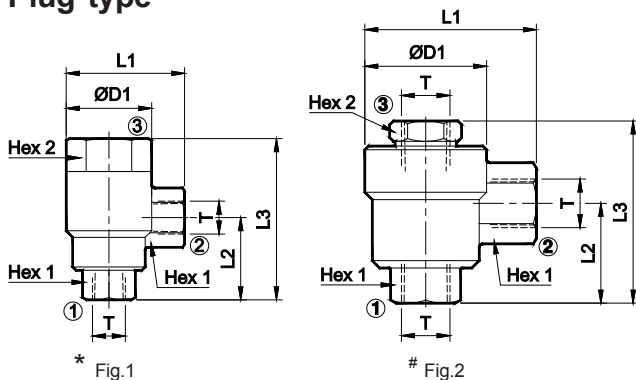
** Pressure 6 bar

Silencer type



Thread T	ØD1	L1	L2	L3	Hex	Ordering No
M5 x 0.8	13	18	12.5	23.5	8	GQ0170
G1/8	26	35.5	21	34.5	16	GQ0150
G1/4	33	46.5	27	42.5	19	GQ0151
G3/8	46	60	35	56.5	24	GQ0152
G1/2	55	73	42.5	68	32	GQ0153

Plug type



Thread T	ØD1	L1	L2	L3	Hex 1	Hex 2	Ordering No
* M5 x 0.8	13	18	12.5	25	8	12	GQ0270
# G1/8	26	35.5	21	39	16	14	GQ0250
# G1/4	33	46.5	27	50	19	17	GQ0251
# G3/8	46	60	35	67	24	24	GQ0252
# G1/2	55	73	42.5	79	32	32	GQ0253

How to Order

While ordering Quick Exhaust Valve, mention the ordering number given in the corresponding tables.

Subject to change